

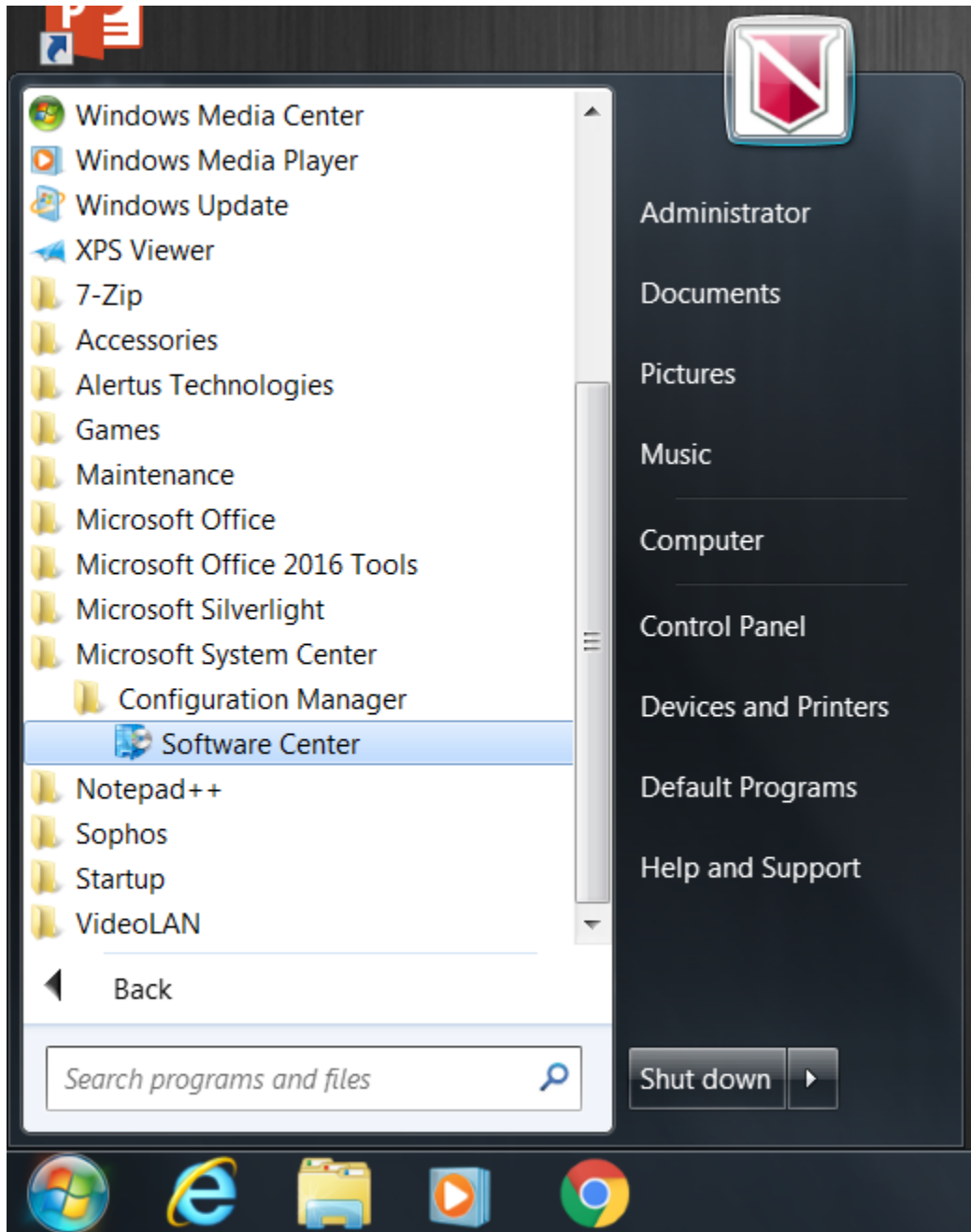
# Application Launcher

The NNU Application Launcher provides Faculty and Staff with access to software especially configured for NNU Employees.

## For Windows 7:

In the event that the Application Launcher desktop icon does not work or is not present, the following steps will help you access the Launcher.

1. Open the **Start Menu**
2. Select All Programs
3. Under **Microsoft System Center**, select **Configuration Manager**, and then **Software Center**



**For Windows 10:** Call the IT Help Desk (208-467-8111) for assistance with program installation.