

# Accessing NNU's NEW WiFi System

## Description

Starting midway through September 2020, NNU will be switching to a new wireless broadcast system. This change means that all users (Students, Faculty, and Staff) will need to re-connect to NNU WiFi using the following documented steps. This new system will allow for easier connection and management of devices on the NNU network.

In short, **NNU-Wireless** and **NNU-Visitor** will be going away and will be replaced with **NNU Wireless** and **NNU Visitor** (Note, no hyphen). Additionally, a new broadcast will appear called **NNU Onboarding**.

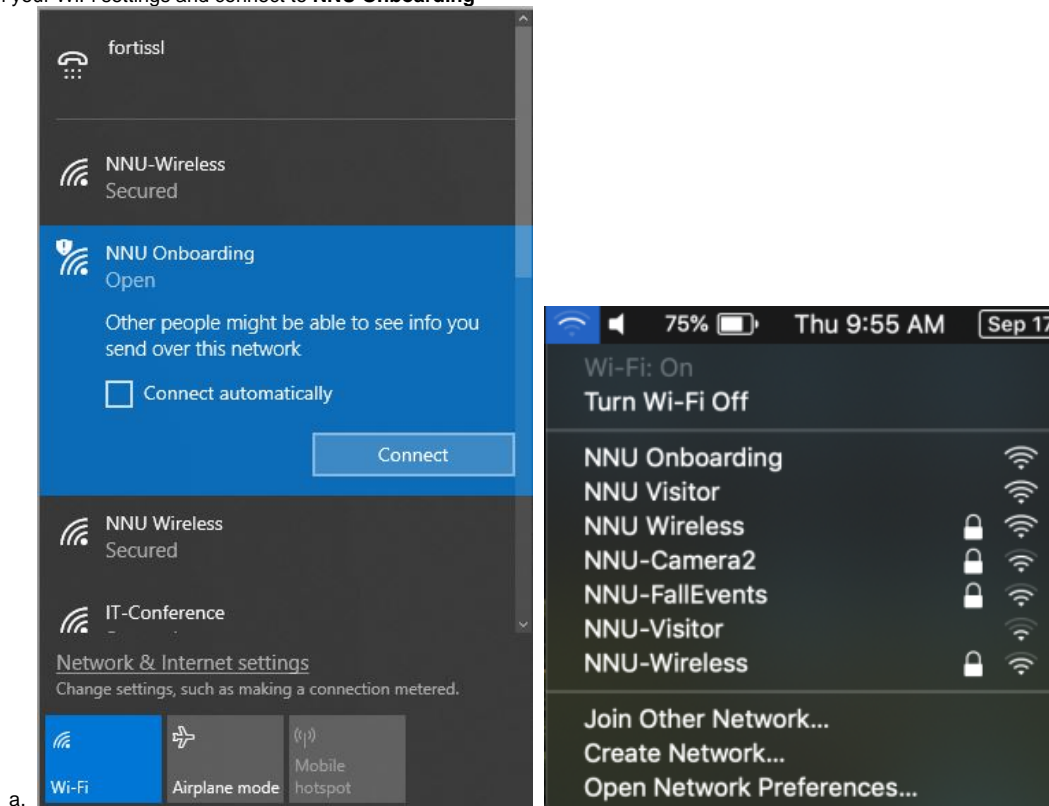
### Need help?

If you are experiencing issues and need assistance, please feel free to contact the IT Services Help Desk by calling 208.467.8111 or sending an email to [help@nnu.edu](mailto:help@nnu.edu)

## Steps

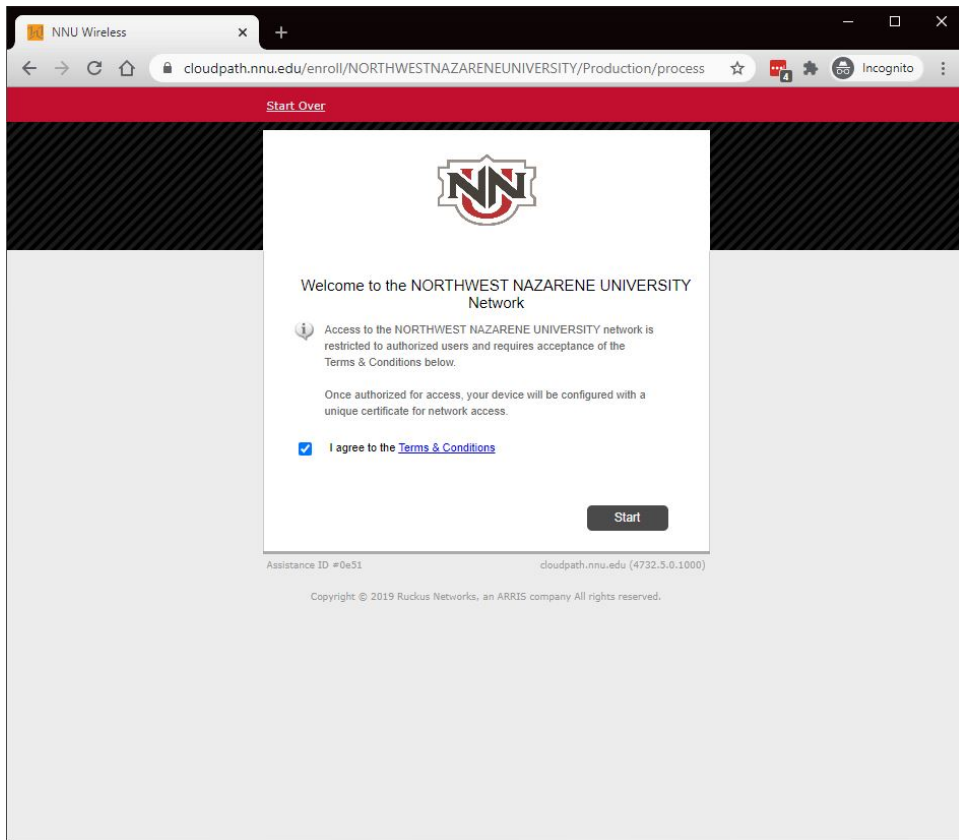
First and foremost, all users must connect to NNU Onboarding

1. Open your WiFi settings and connect to **NNU Onboarding**



2. A browser window should open and you will automatically be routed to a login page

! If you are not automatically routed to the login page, open a browser (preferable Chrome) and navigate to [cloudpath.nnu.edu](https://cloudpath.nnu.edu)



a.


to NNU's Network Terms & Conditions

Check the box to agree

3. Click Start

4. Type in your **NNU network username and password** (Your MyNNU Portal/Canvas credentials), click **Continue**

Start Over



Your NNU username and password are required to access the network.

Username:

Password:

< Back      Continue >

Assistance ID #0e51      cloudpath.nnu.edu (4732.5.0.1000)

Copyright © 2019 Ruckus Networks, an ARRIS company All rights reserved.

a.

5. The following steps will change for Students and Employees, please follow the instructions listed below under the appropriate category.

- [Advanced Wireless Troubleshooting](#)
- [Dorm WiFi and Your Wireless Printer](#)
- [Employees - Connecting to NNU Wireless on a Laptop or Desktop](#)
- [Employees - Connecting to NNU Wireless on a Mobile Device](#)
- [Students - Connecting to NNU Wireless on a Laptop or Desktop](#)
- [Students - Connecting to NNU Wireless on a Mobile Device \(Phone\)](#)
- [Visitors - Connecting to NNU Visitor wireless](#)